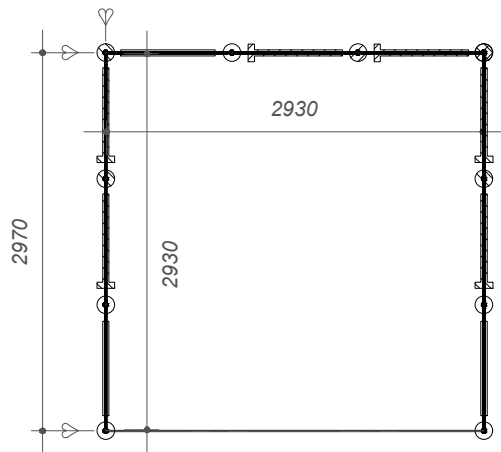
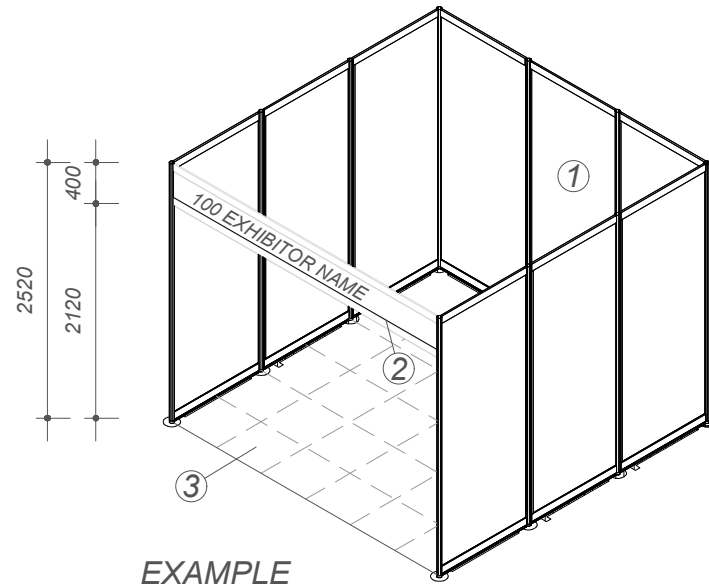


## PLMA's World of Private Label 19-20 May 2026



TOP VIEW / SPACE MEASUREMENTS

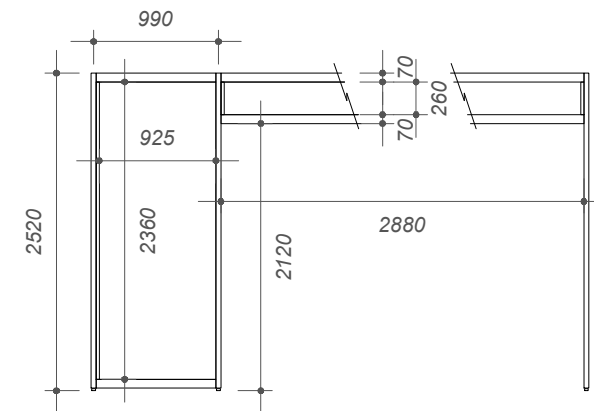
### SHELL SCHEME STAND EXAMPLE 1-Unit, 3x3 mtr. stand (one side open)

- ① White walls, separating exhibitors
  - ② Fascia, showing exhibitor name (as listed in the official trade show catalogue) and stand number
  - ③ Grey carpet tiles
- Submit Shell Stand Form on PLMA's Exhibitor portal -

### CONTACT GIELISSEN FOR:

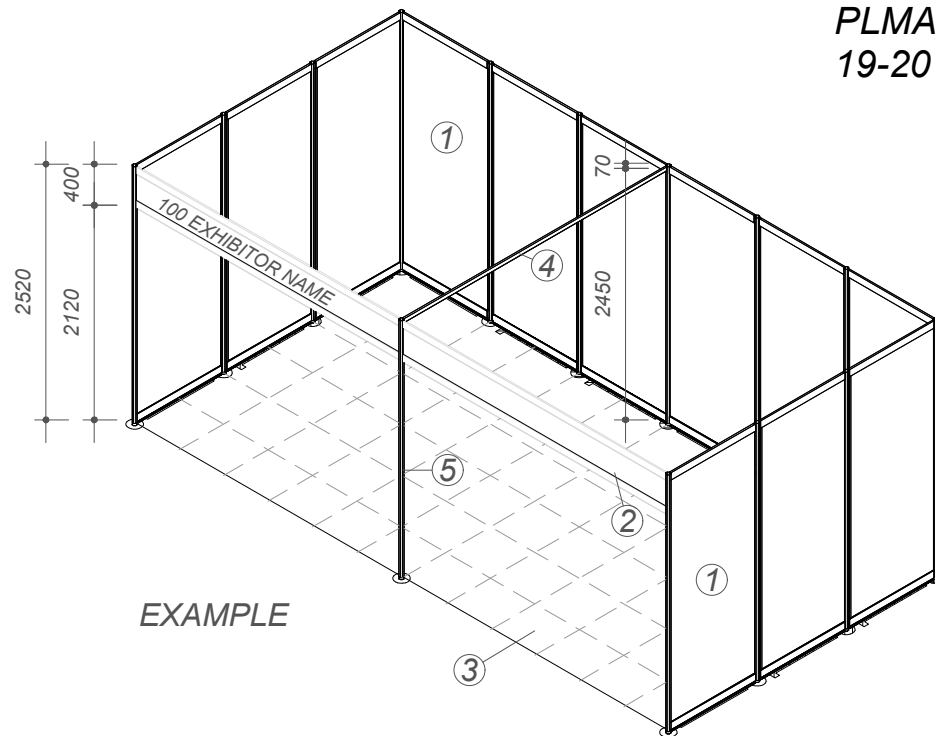
- \* Stand necessities: electricity & lighting, furniture, signage, audio-video, shell scheme additional, floor covering, raised floor, water, floral decoration, photography
  - \* Position of nearest service ducts
  - \* Complete stand packages
- Submit Grid Form on Gielissen's Online Contractor Manual -

You are not allowed to damage shell scheme elements.  
Please do not use aggressive adhesive / fastening material for attaching own graphics and remove your own graphics directly after the end of the show.



WALL AND FASCIA

# PLMA's World of Private Label 19-20 May 2026



EXAMPLE

## SHELL SCHEME STAND EXAMPLE 2-Unit, 6x3 mtr. stand (one side open)

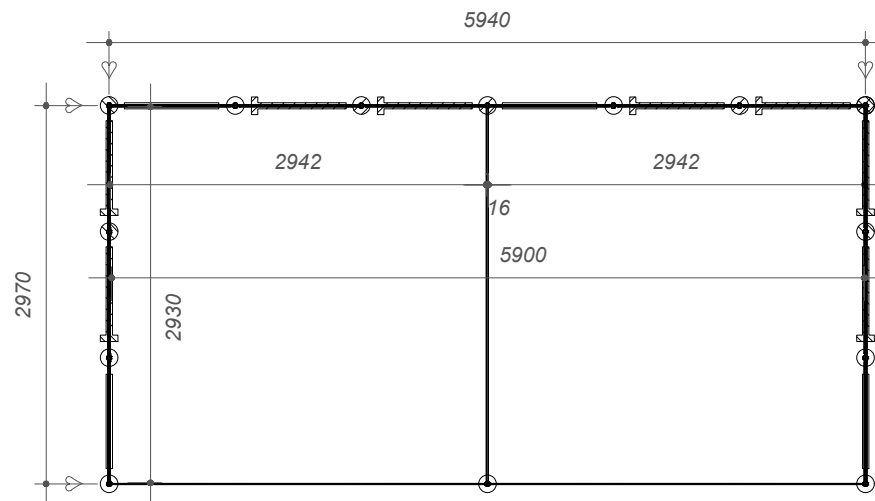
- ① White walls, separating exhibitors
- ② Fascia, showing exhibitor name (as listed in the official trade show catalogue) and stand number
- ③ Grey carpet tiles
- ④ Ceiling plinth
- ⑤ Pole

- Submit Shell Stand Form on PLMA's Exhibitor portal -

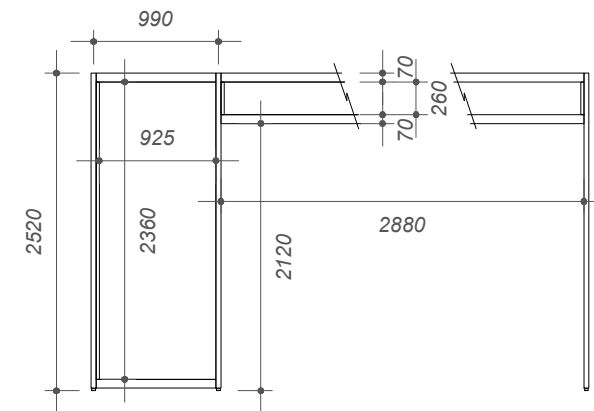
## CONTACT GIELISSEN FOR:

- \* Stand necessities: electricity & lighting, furniture, signage, audio-video, shell scheme additional, floor covering, raised floor, water, floral decoration, photography
- \* Position of nearest service ducts
- \* Complete stand packages
- Submit Grid Form on Gielissen's Online Contractor Manual -

You are not allowed to damage shell scheme elements.  
Please do not use aggressive adhesive / fastening material for attaching own graphics and remove your own graphics directly after the end of the show.

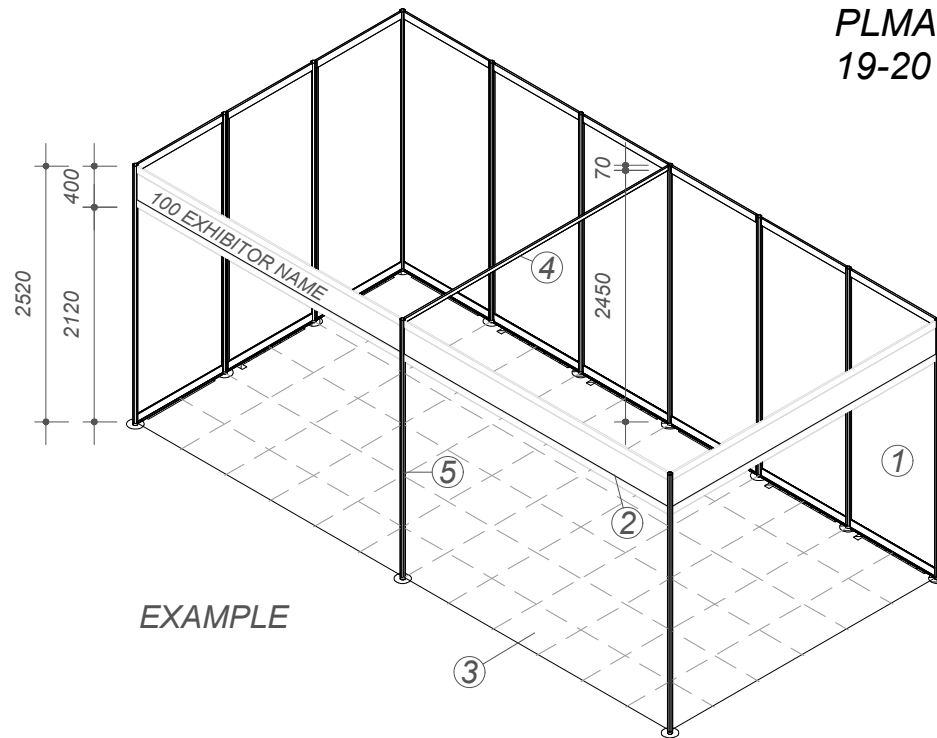


TOP VIEW / SPACE MEASUREMENTS

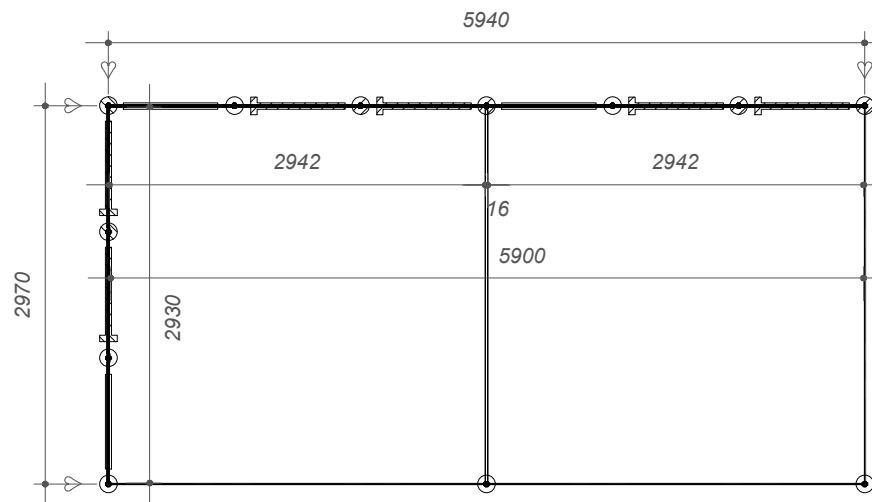


WALL AND FASCIA

## PLMA's World of Private Label 19-20 May 2026



EXAMPLE



TOP VIEW / SPACE MEASUREMENTS

### SHELL SCHEME STAND EXAMPLE 2-Unit, 6x3 mtr. corner stand (two sides open)

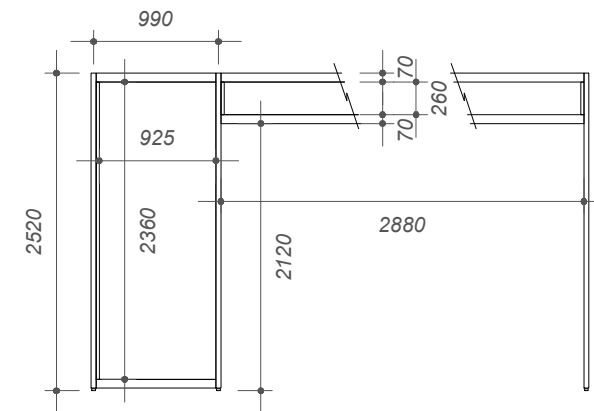
- ① White walls, separating exhibitors
- ② Fascia, showing exhibitor name (as listed in the official trade show catalogue) and stand number
- ③ Grey carpet tiles
- ④ Ceiling plinth
- ⑤ Pole

- Submit Shell Stand Form on PLMA's Exhibitor portal -

### CONTACT GIELISSEN FOR:

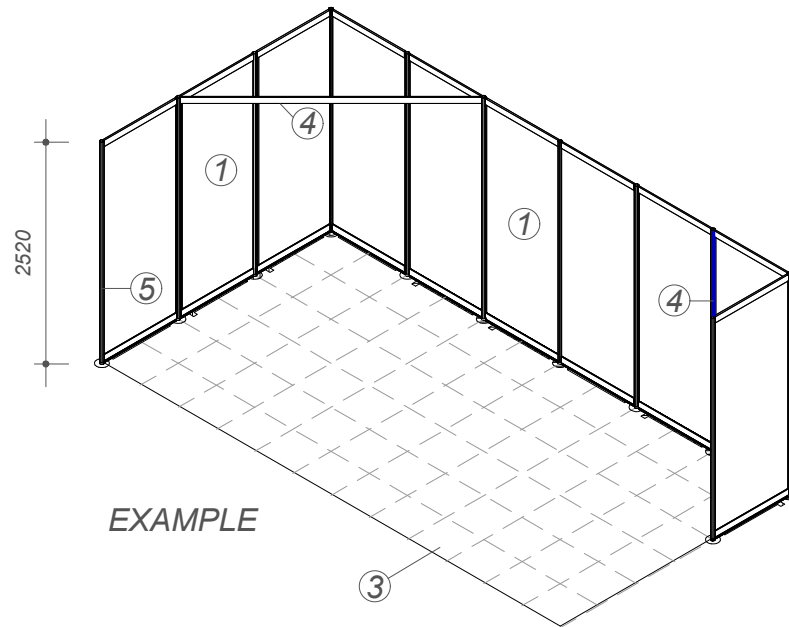
- \* Stand necessities: electricity & lighting, furniture, signage, audio-video, shell scheme additional, floor covering, raised floor, water, floral decoration, photography
- \* Position of nearest service ducts
- \* Complete stand packages
- Submit Grid Form on Gielissen's Online Contractor Manual -

You are not allowed to damage shell scheme elements.  
Please do not use aggressive adhesive / fastening material for attaching own graphics and remove your own graphics directly after the end of the show.



WALL AND FASCIA

# PLMA's World of Private Label 19-20 May 2026



**SHELL SCHEME STAND EXAMPLE**  
2-Unit, 6x3 mtr. corner stand (two sides open, no Fascia)

① White walls, separating exhibitors

③ Grey carpet tiles

④ Ceiling plinth

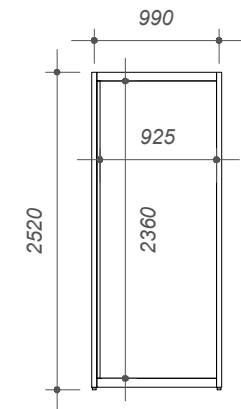
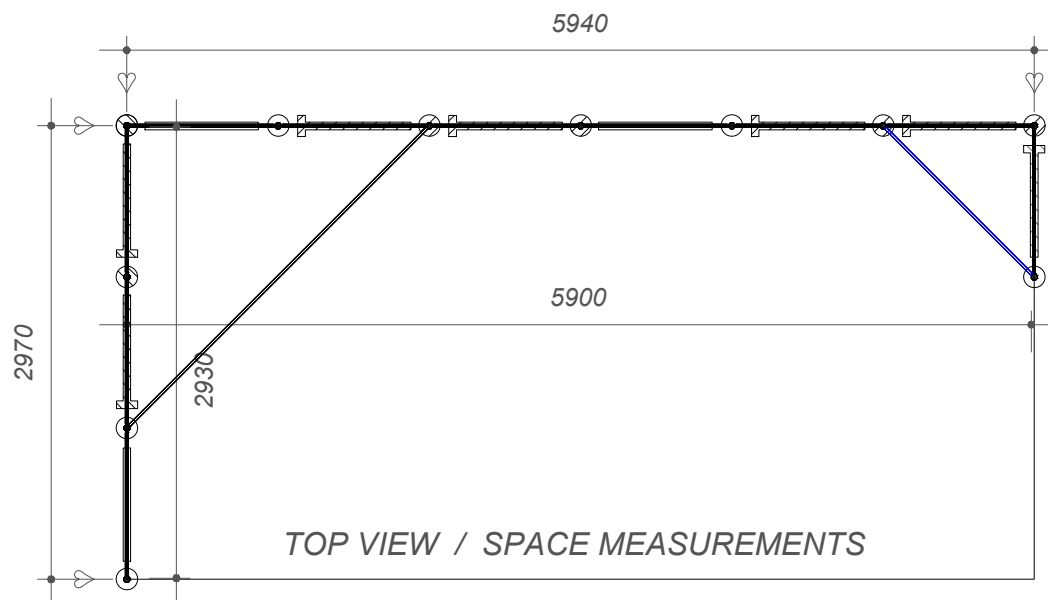
⑤ Pole

- Submit Shell Stand Form on PLMA's Exhibitor portal -

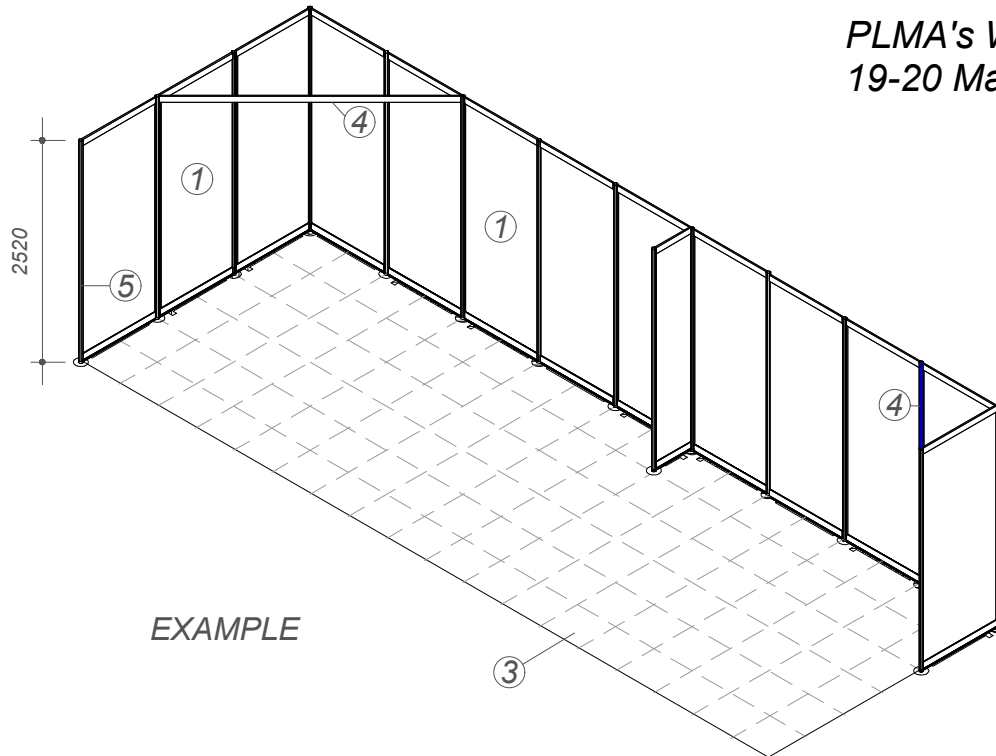
**CONTACT GIELISSEN FOR:**

- \* Stand necessities: electricity & lighting, furniture, signage, audio-video, shell scheme additional, floor covering, raised floor, water, floral decoration, photography
- \* Position of nearest service ducts
- \* Complete stand packages
- Submit Grid Form on Gielissen's Online Contractor Manual -

You are not allowed to damage shell scheme elements.  
Please do not use aggressive adhesive / fastening material for attaching own graphics and remove your own graphics directly after the end of the show.



# PLMA's World of Private Label 19-20 May 2026



EXAMPLE

## SHELL SCHEME STAND EXAMPLE 3-Unit, 9x3 mtr. corner stand (two sides open, no Fascia)

- ① White walls, separating exhibitors
- ③ Grey carpet tiles
- ④ Ceiling plinth
- ⑤ Pole

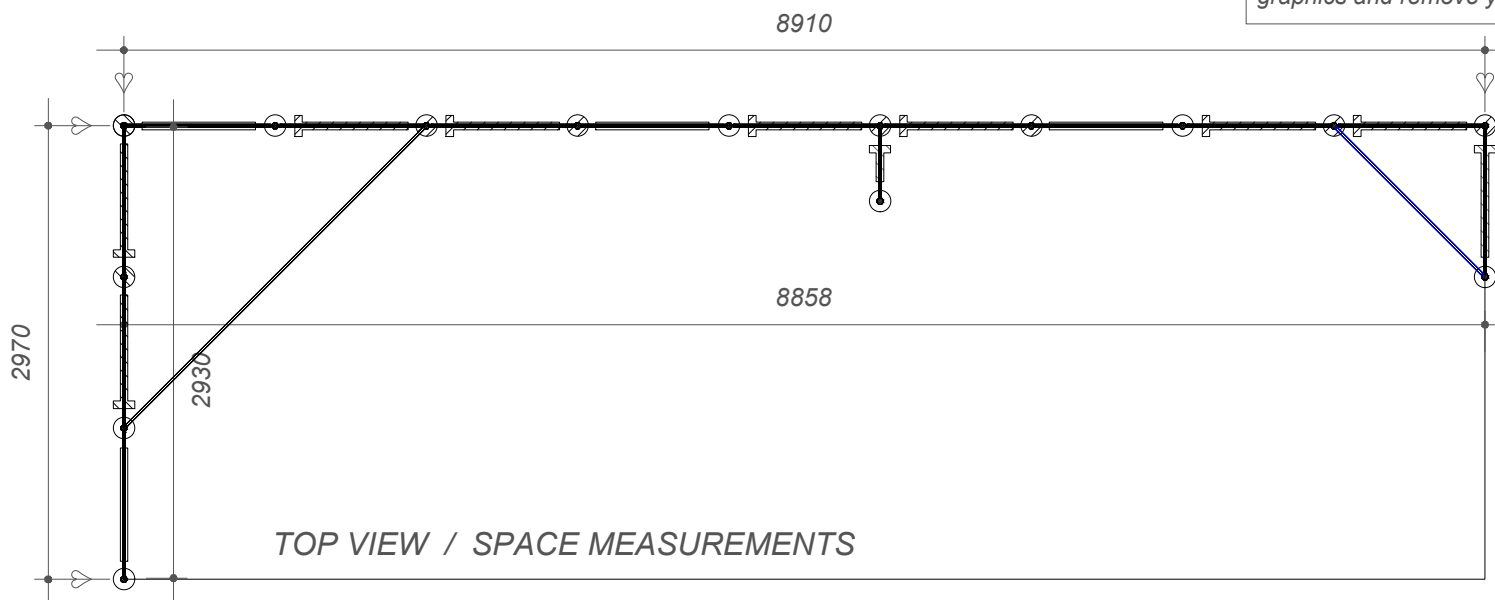
- Submit Shell Stand Form on PLMA's Exhibitor portal -

### CONTACT GIELISSEN FOR:

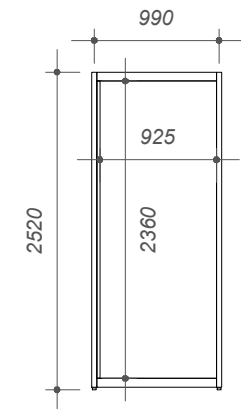
- \* Stand necessities: electricity & lighting, furniture, signage, audio-video, shell scheme additional, floor covering, raised floor, water, floral decoration, photography
- \* Position of nearest service ducts
- \* Complete stand packages

- Submit Grid Form on Gielissen's Online Contractor Manual -

You are not allowed to damage shell scheme elements.  
Please do not use aggressive adhesive / fastening material for attaching own graphics and remove your own graphics directly after the end of the show.



TOP VIEW / SPACE MEASUREMENTS



WALL